

RICHLAND COUNTY CS# 8136
 RECORDED AUGUST 7, 1983
 VOLUME 1 PAGE 353-354
 DOCUMENT 8310285

CURVE 1:
 AS RECORDED CS# 8136
 DELTA 0° 48' 00"
 ARC 262.73'
 TANGENT 447.71'
 RADIUS 423.87'
 CHORD 262.39'
 CB 157° 32' 32"
 ST TANGENT 384.7347' W
 2ND TANGENT 483.9403' W

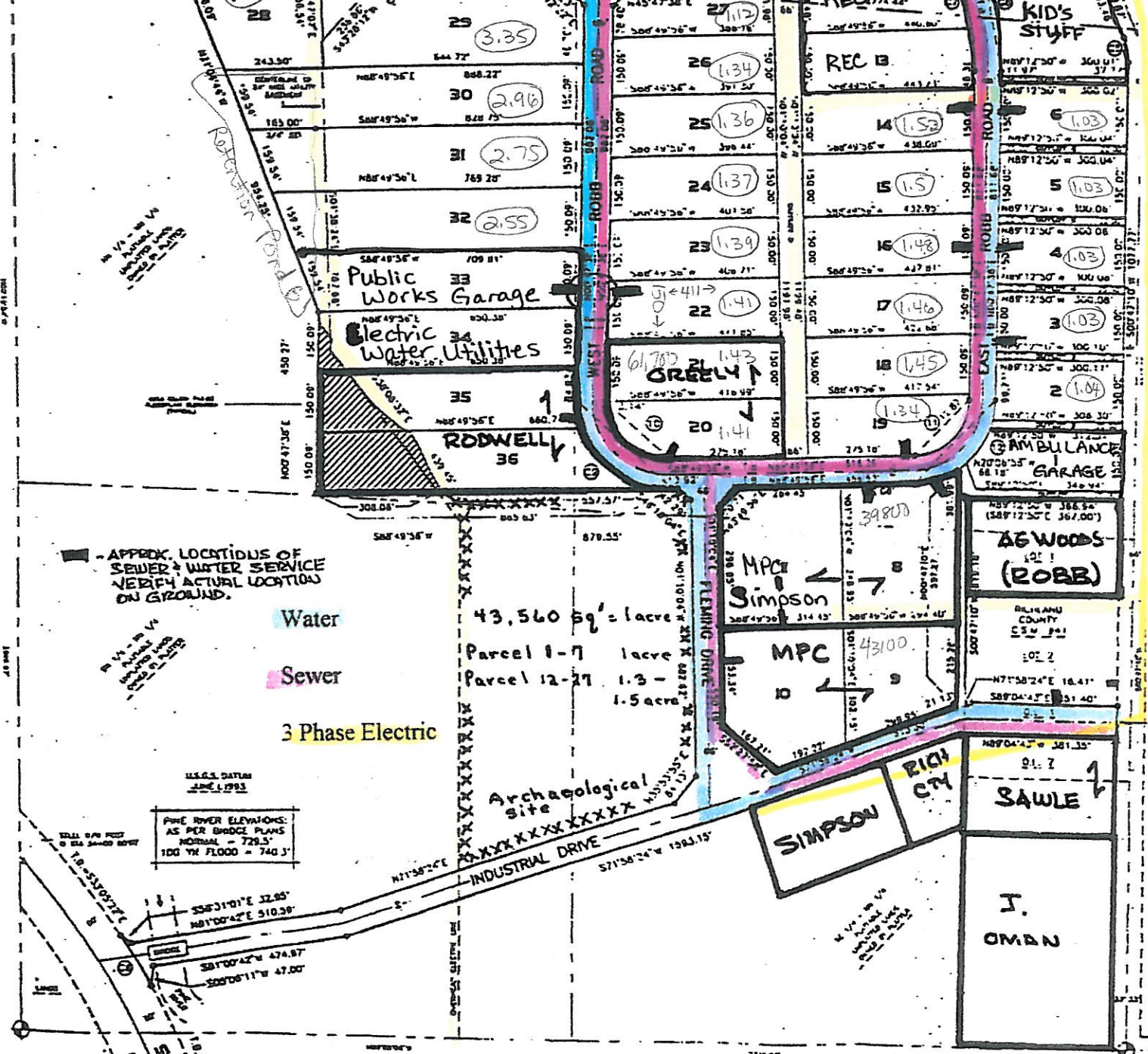
CURVE 2:
 AS RECORDED CS# 8136
 DELTA 12° 00' 00"
 ARC 463.16'
 TANGENT 242.97'
 RADIUS 423.00'
 CHORD 481.76'
 CB 177° 32' 32"
 ST TANGENT 349.3337' W
 2ND TANGENT 384.2397' W

NO. 11
 CURVES C1, C3 AND C4
 ARE NON-TANGENT AS RECORDED
 IN RICHLAND COUNTY CS# 8136

RICHTY HWY.

DETAIL NOT TO SCALE

NW CORNER
 SEC 9-10-11E
 BRASS CAP
 IN CONCRETE



U.S.G.S. DATUM
 1983

FINE RIVER ELEVATIONS:
 AS PER BRIDGE PLANS
 NORMAL = 729.5'
 100 YR FLOOD = 740.3'

43,560 sq' = 1 acre
 Parcel 1-7 1 acre
 Parcel 12-27 1.3 - 1.5 acres

C CTY FAIRGROUNDS