

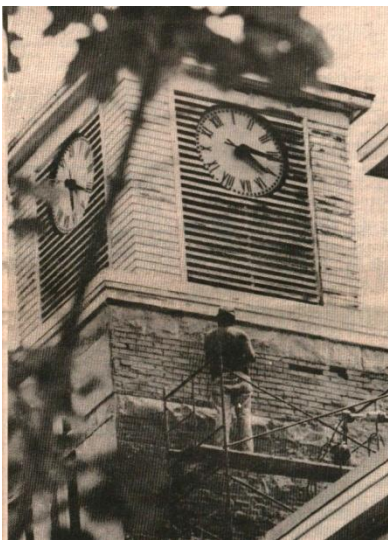


Photo provided by Wisconsin State Historical Society.

### **Richland County Courthouse, 179 West Seminary Street, 1889.**

Designed in the Romanesque Revival style by Madison architect J.D. Allen, this red brick courthouse is ornamented by white stone accents including lintel courses, arched window hoods, an open porch with short Romanesque style columns decorated with capitals of carved acanthus leaves and a stone foundation. Revival of Romanesque architecture, a round arch medieval style, began in the 1840s in America. This building is the earliest and most important example of the Romanesque Revival influence in Richland Center.

Although sympathetically restored in 1983, the courthouse's original architectural character was diminished during the 1953 remodeling project when the building was stripped of its original hip and gable roof, as well as the conical roof on the south tower and the pyramidal roof and upper stage including the clock of the north tower. The façade, flanked by a square clock tower on the north and a round tower on the south, has a projecting hip roof entrance bay and second story inset porch (now enclosed). Constructed of local brick fired at the Mininski Brickyard, this courthouse replaced an earlier courthouse built on the site in 1860.



Richland Observer photos.





The Richland County Courthouse - 1889.